



## EAGLE'S LANDING

15,807 SF Available

**1565 Jefferson Rd,  
Rochester, 14623**

This modern office space features an open floor plan with perimeter offices, multiple conference rooms, a large meeting area, and exposed ceiling and ductwork. As an end cap space, this office features extra windows with plenty of natural light.

### PROPERTY

*highlights*

- ✓ Open Floor Plan
- ✓ Several Conference Rooms
- ✓ 1 Dock w/ the Ability to Add Up to 2 Docks
- ✓ Ample Parking



**BUCKINGHAM  
PROPERTIES**



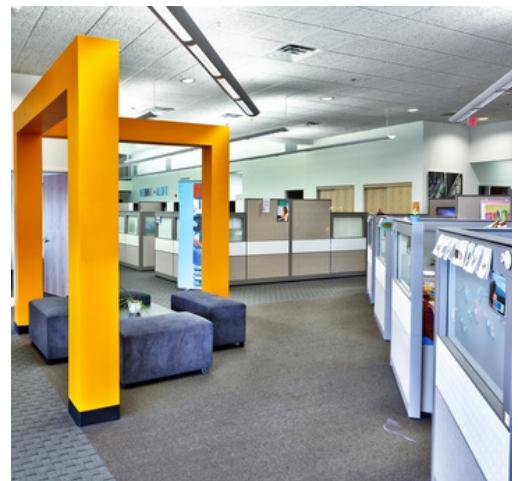
**ADAM BORRELL**

*Senior Leasing Executive*

(585) 615-3593 | [aborrell@buckprop.com](mailto:aborrell@buckprop.com)



**15,807 SF**



**BUCKINGHAM  
PROPERTIES**



**ADAM BORRELL**

*Senior Leasing Executive*

(585) 615-3593 | [aborrell@buckprop.com](mailto:aborrell@buckprop.com)





## EAGLE'S LANDING

**5,403 SF Available**

**1565 Jefferson Rd,  
Rochester, 14623**

Eagle's Landing is a flex business park with a campus-style setting in the desirable Henrietta suburb of Rochester.

The park includes four parallel flex buildings totaling 190,000 square feet.

The available 5,403 SF space features 1,500 SF of office and 3,900 SF of warehouse, one loading dock, and ample surface parking.

### PROPERTY

*highlights*

- ✓ 1,500 Office
- ✓ 3,900 SF Warehouse
- ✓ 1 Loading Dock
- ✓ Ample Parking



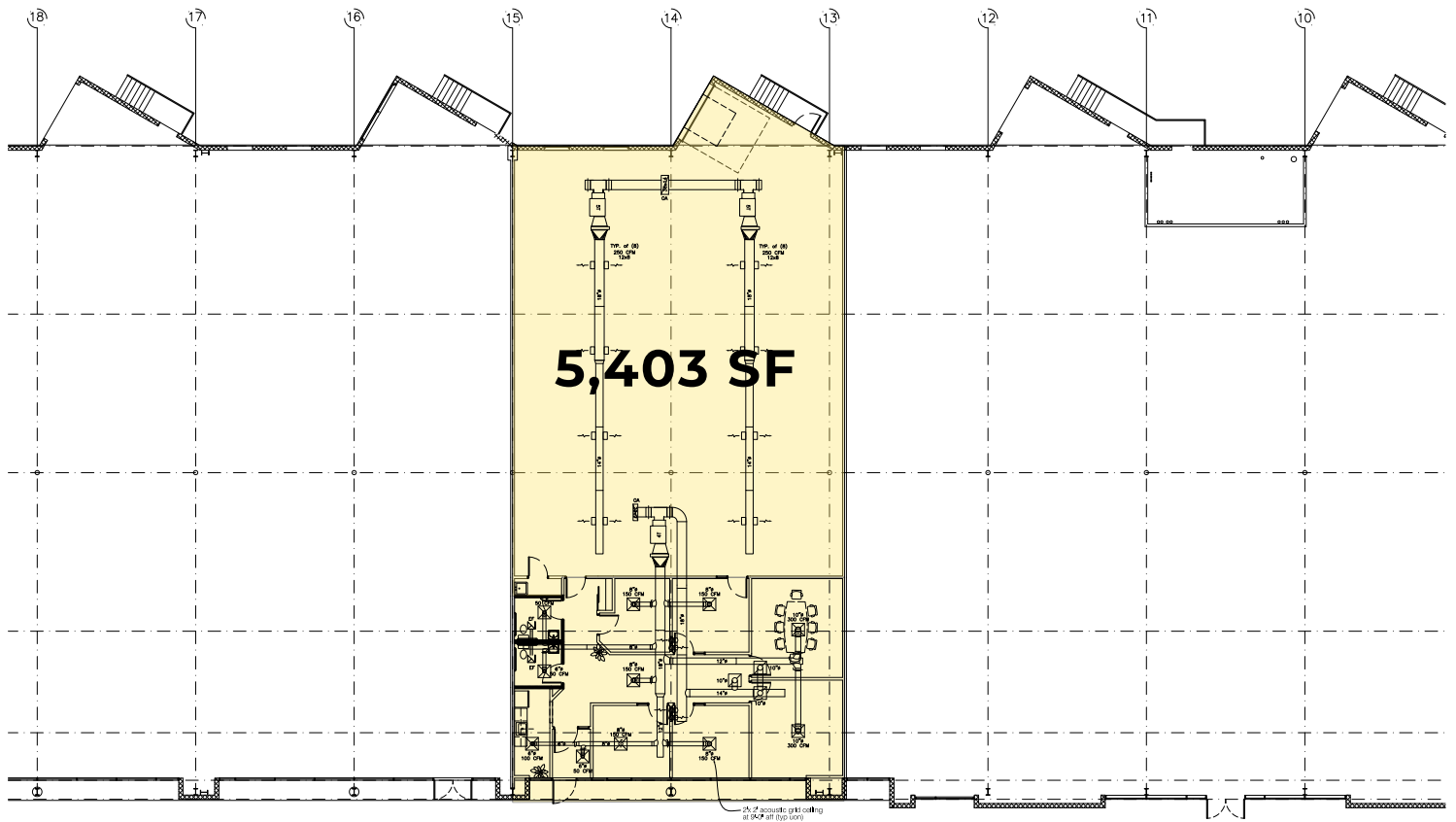
**BUCKINGHAM  
PROPERTIES**



**ADAM BORRELL**

*Senior Leasing Executive*

(585) 615-3593 | [aborrell@buckprop.com](mailto:aborrell@buckprop.com)



**BUCKINGHAM**  
PROPERTIES



**ADAM BORRELL**

*Senior Leasing Executive*

(585) 615-3593 | [aborrell@buckprop.com](mailto:aborrell@buckprop.com)