



## OFFICE FOR LEASE

*Up to 34,179 SF Available*

**1 Bausch and Lomb Pl,  
Rochester, NY 14604**

Legacy Tower is a premier Class A office destination in the heart of downtown Rochester. With expansive layouts, modern meeting and training rooms, and a grand marble entry, this landmark building offers the space, presence, and convenience your business needs to thrive. Enjoy unmatched amenities and sweeping views—all just steps from the city's best dining, services, and entertainment.

## PROPERTY

*highlights*

- ✓ Direct Tunnel Access to Parking Garage
- ✓ Stunning Downtown Views
- ✓ Onsite Café - The Wintergarden Café
- ✓ Free Access to On-site Fitness Center
- ✓ On-site Front Desk Security
- ✓ 24/7 Training Rooms Access



OPEN FLOORPLAN



TRAINING ROOM



CONFERENCE ROOMS



KITCHENETTE



**BUCKINGHAM  
PROPERTIES**

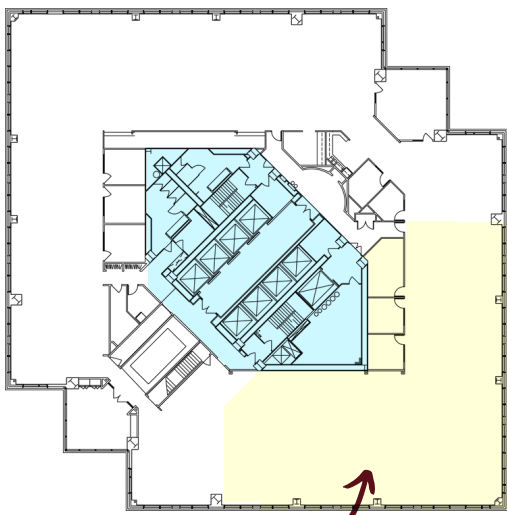


**ADAM BORRELL**

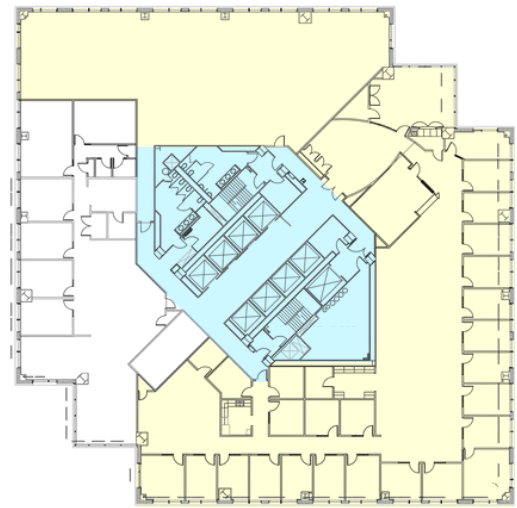
*Senior Leasing Executive*

(585) 615-3593 | [aborrell@buckprop.com](mailto:aborrell@buckprop.com)

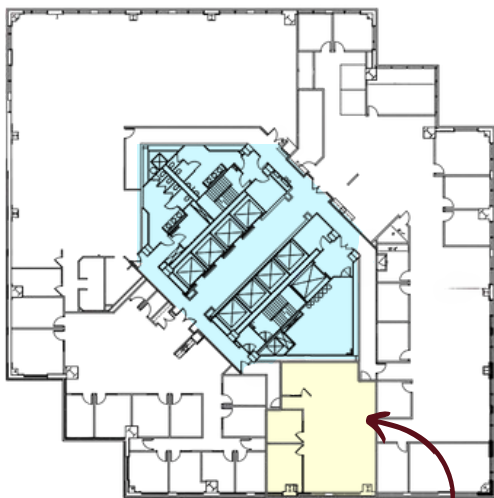




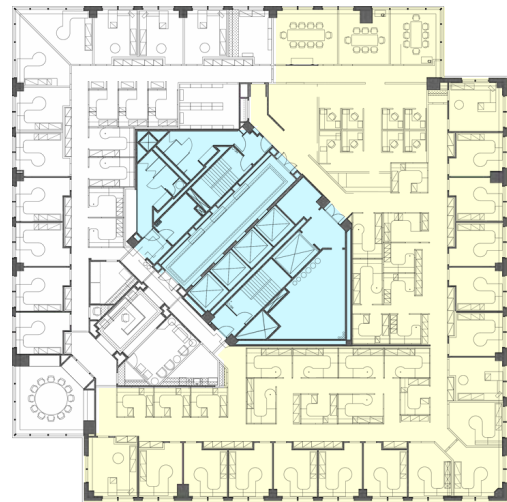
4th Floor - **8,200 SF**



7th Floor - **15,619 SF**



9th Floor - **1,678 SF (Expansion Only)**



16th Floor - **10,360 SF**



FULL ON-SITE FITNESS CENTER



ON-SITE PARKING GARAGE  
WITH DIRECT TUNNEL ACCESS



MAKE AN IMPRESSION WITH A  
STUNNING, HIGH-END LOBBY



**BUCKINGHAM  
PROPERTIES**



**ADAM BORRELL**

*Senior Leasing Executive*

(585) 615-3593 | [aborrell@buckprop.com](mailto:aborrell@buckprop.com)