



EAGLE'S LANDING

5,403 SF Available

**1565 Jefferson Rd,
Rochester, 14623**

Eagle's Landing is a flex business park with a campus-style setting in the desirable Henrietta suburb of Rochester.

The park includes four parallel flex buildings totaling 190,000 square feet.

The available 5,403 SF space features 1,500 SF of office and 3,900 SF of warehouse, one loading dock, and ample surface parking.

PROPERTY

highlights

- ✓ 1,500 Office
- ✓ 3,900 SF Warehouse
- ✓ 1 Loading Dock
- ✓ Ample Parking



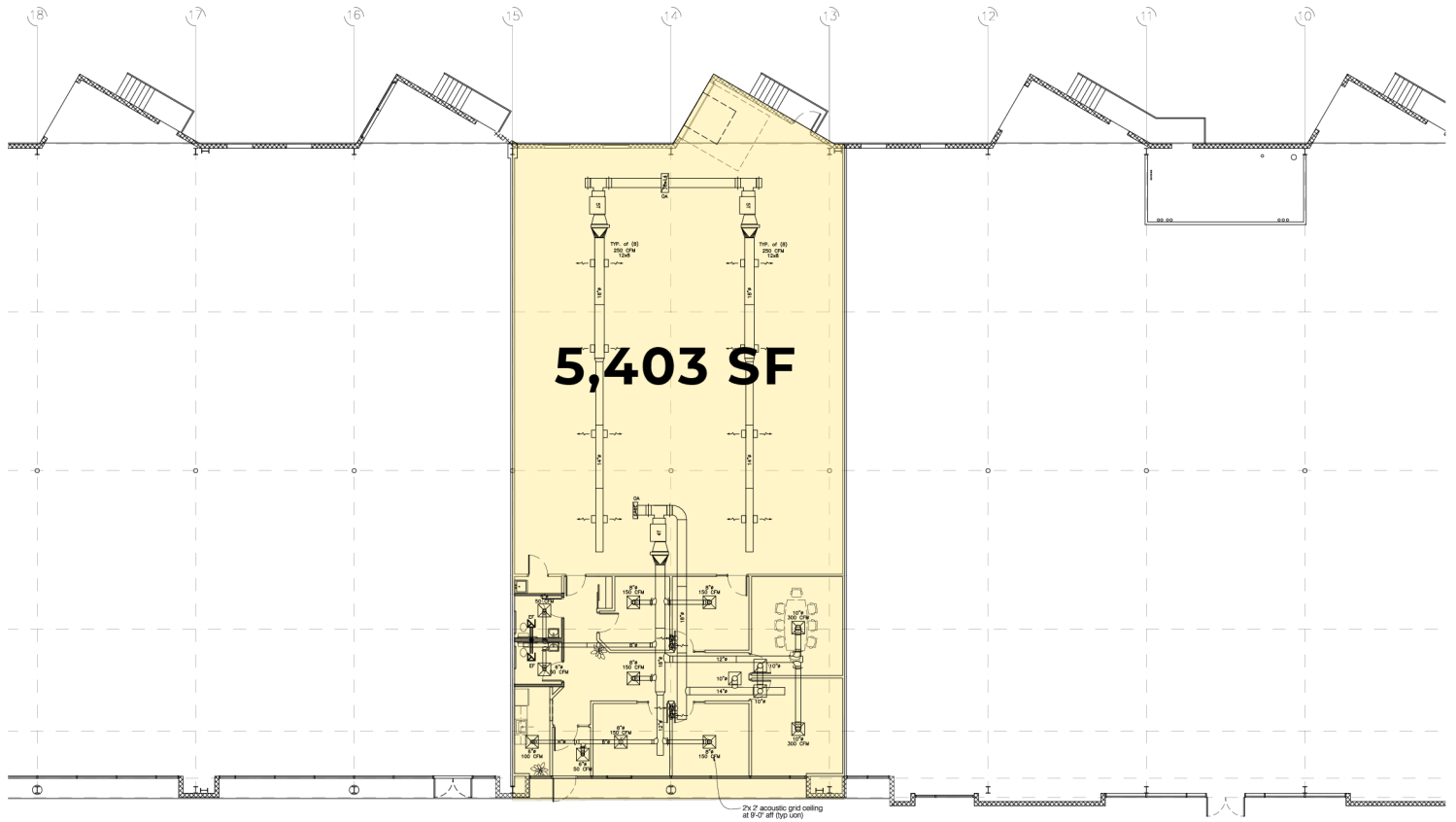
**BUCKINGHAM
PROPERTIES**



ADAM BORRELL

Senior Leasing Executive

(585) 615-3593 | aborrell@buckprop.com



BUCKINGHAM
PROPERTIES



ADAM BORRELL

Senior Leasing Executive

(585) 615-3593 | aborrell@buckprop.com



EAGLE'S LANDING
15,807 SF Available

**1565 Jefferson Rd,
Rochester, 14623**

This modern office space features an open floor plan with perimeter offices, multiple conference rooms, a large meeting area, and exposed ceiling and ductwork. As an end cap space, this office features extra windows with plenty of natural light. The space has one dock, with the ability to install five more.

PROPERTY

highlights

- ✓ Open Floor Plan
- ✓ Several Conference Rooms
- ✓ 1 Dock w/ the Ability to Add 5 More
- ✓ Ample Parking



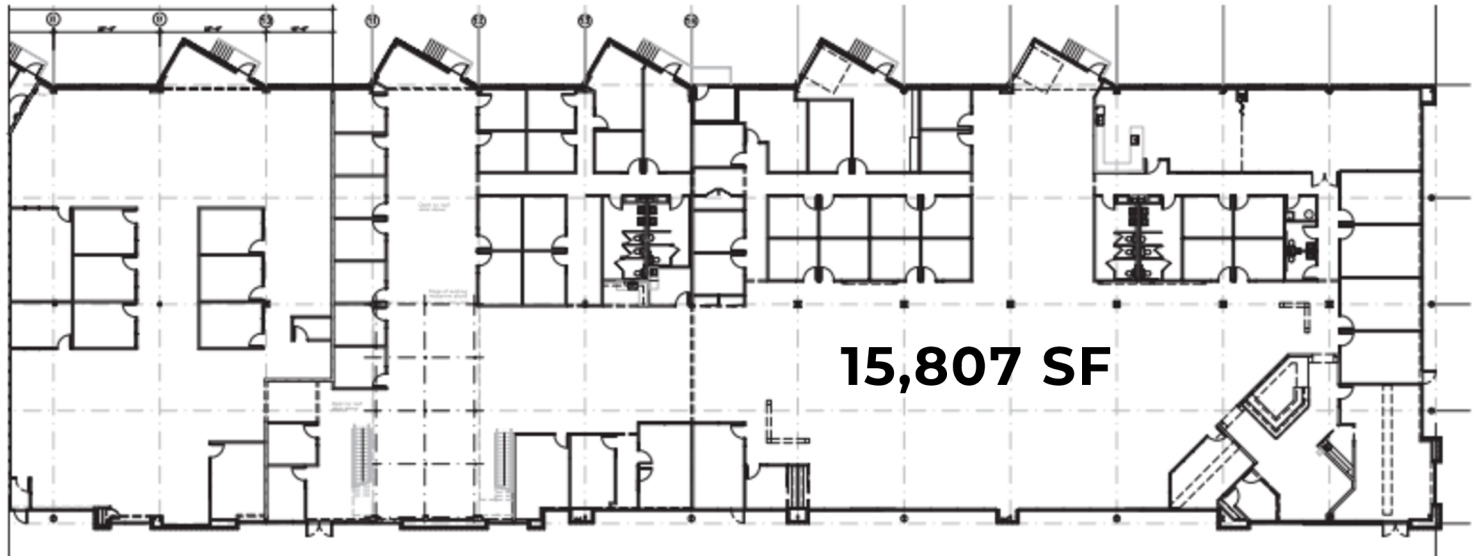
**BUCKINGHAM
PROPERTIES**



ADAM BORRELL

Senior Leasing Executive

(585) 615-3593 | aborrell@buckprop.com



BUCKINGHAM
PROPERTIES



ADAM BORRELL

Senior Leasing Executive

(585) 615-3593 | aborrell@buckprop.com