



ROCHESTER BUSINESS CENTER

465 Paul Road, Rochester, NY 14624



ADAM BORRELL

Senior Leasing Executive

(585) 615-3593

aborrell@buckprop.com

SQUARE FOOTAGE AVAILABLE

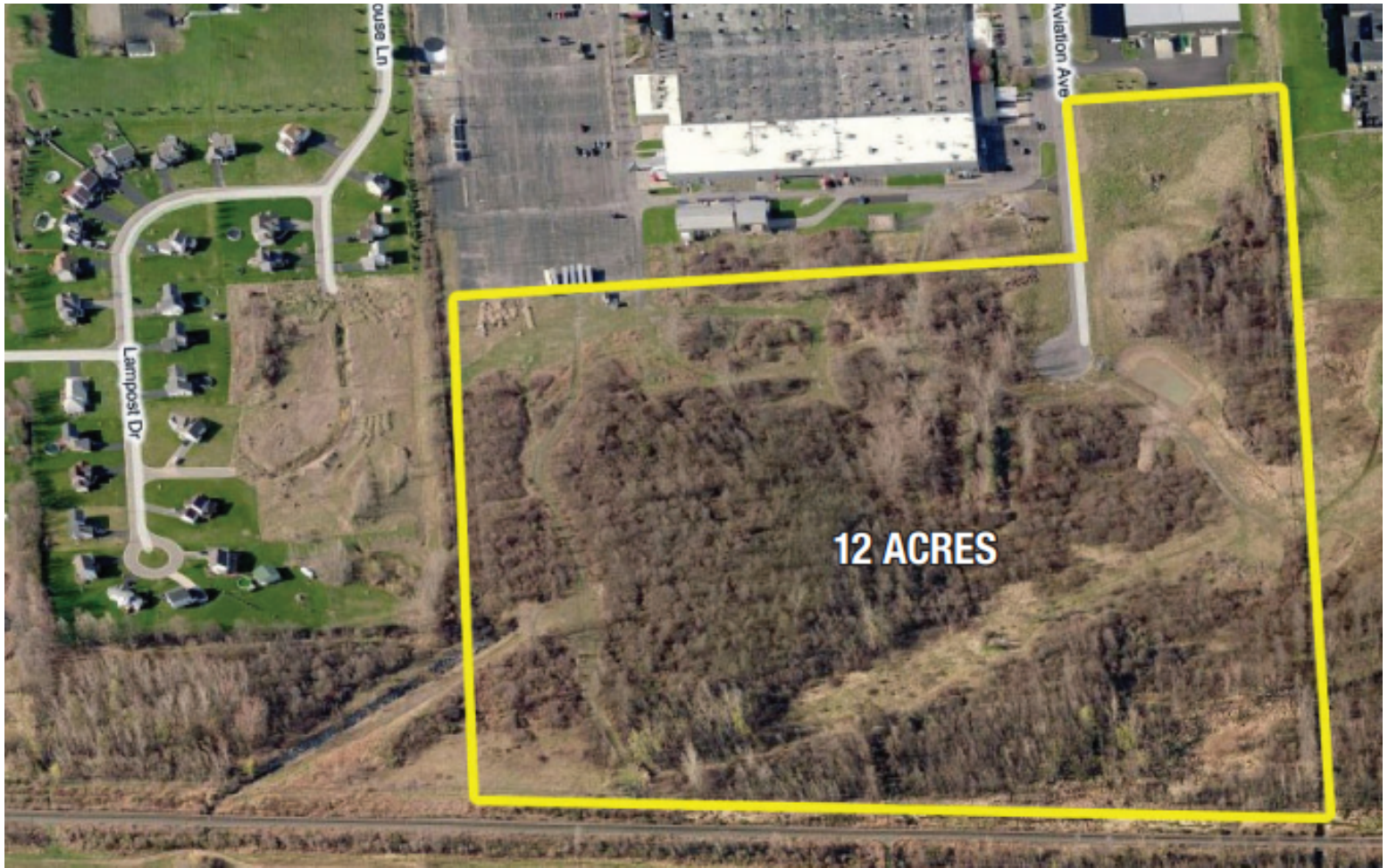
27,220 SF

ABOUT THE SPACE

Rochester Business Center is a large manufacturing and warehouse/distribution facility located in the Town of Chili. Minutes from City of Rochester, I-590, I-390, NYS Thruway, airport and all truck routes.



BUCKINGHAM PROPERTIES



READY FOR DEVELOPMENT

465 Paul Road, Rochester, NY 14624



TOM LATTA

VP of Leasing &
Tenant Relations

(585) 478-7824

tlatta@buckprop.com

DEVELOPMENT SPACE

12 acres

ABOUT THE SPACE

Adjacent to existing manufacturing facility and warehouse/distribution in a campus-type setting. Former Bausch and Lomb Frame Center. Located in Town of Chili. Minutes from City of Rochester, I-590, I-390, NYS Thruway, airport and all truck routes.



BUCKINGHAM PROPERTIES