



ELMWOOD PROFESSIONAL CENTER

1580 Elmwood Ave, Rochester, NY 14620



JARED PETRICHICK

Leasing & Tenant Relations

(585) 236-7070

jpetrichick@buckprop.com

SQUARE FOOTAGE

2,296 SF Available

ABOUT THE SPACE

This beautiful first-story medical/office suite features a conference room, kitchenette, private restroom, five private offices and a storage room. The building currently contains of a handful of well-established medical offices.

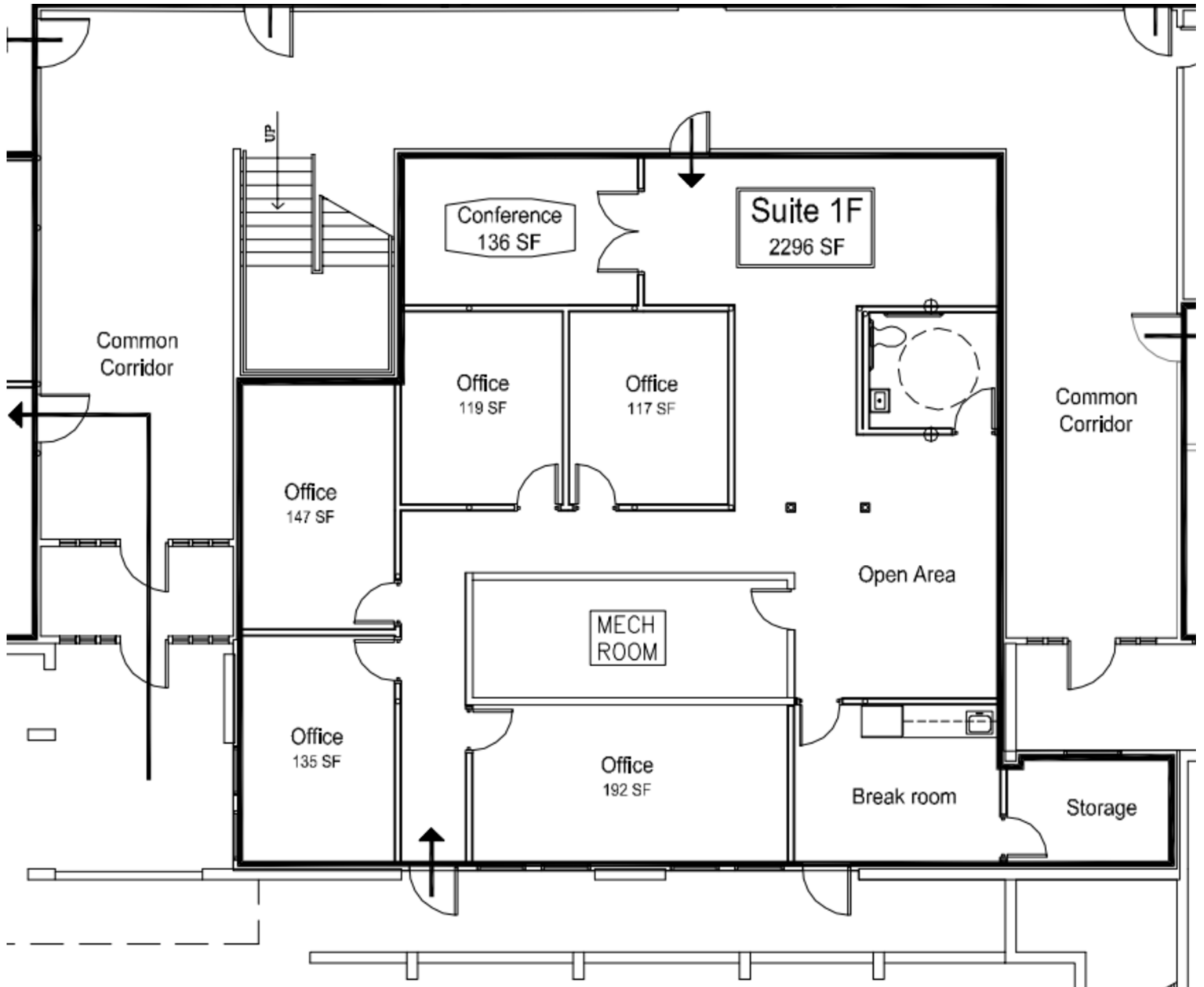


BUCKINGHAM PROPERTIES

(585) 295-9500 | www.buckprop.com | 259 Alexander Street, Rochester, NY

ELMWOOD PROFESSIONAL CENTER

1580 Elmwood Ave, Rochester, NY 14620



BUCKINGHAM PROPERTIES