



MXED-USE REDEVELOPMENT

739 South Clinton Avenue, Rochester, NY 14620



TOM LATTA

*VP of Leasing & Tenant
Relations*

(585) 478-7824

tlatta@buckprop.com

SQUARE FOOTAGE

4,068 SF

ABOUT THE SPACE

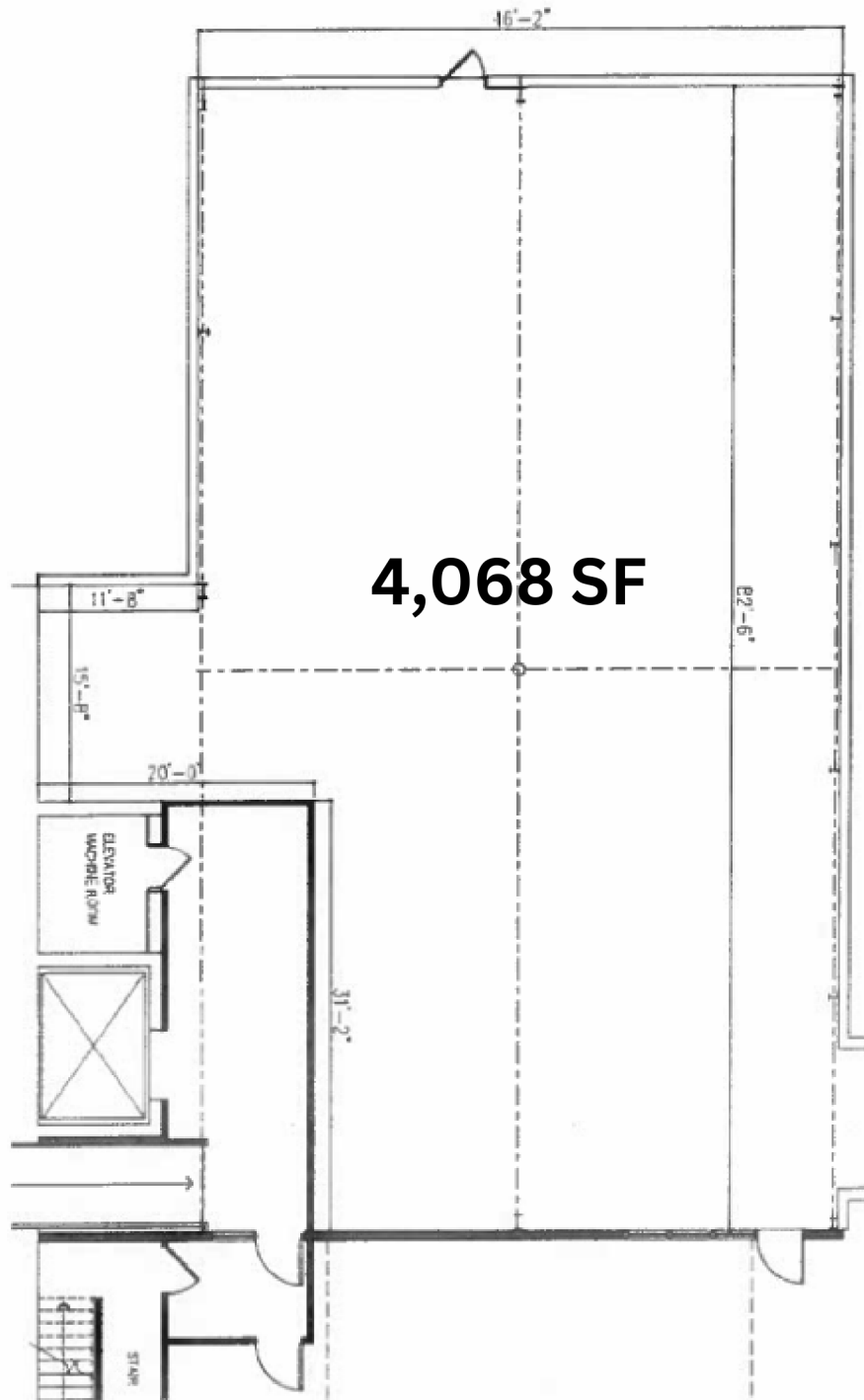
739 S. Clinton Avenue is an exciting mixed-use destination in the South Wedge. Upper floors of the main building offer 30 residential lofts which makes for a convenient, built-in customer base. The high visibility retail opportunity features an industrial interior with exposed brick and beams. Completely redeveloped in 2016. Parking is on-site with surrounding surface lots.



BUCKINGHAM PROPERTIES

SOUTH EDGE OF THE WEDGE

739 South Clinton Avenue, Rochester, NY 14620



BUCKINGHAM PROPERTIES