



WASHINGTON BUILDING

1 S Washington St, Rochester, NY 14614



ADAM BORRELL

Senior Leasing Executive

(585) 615-3593

aborrell@buckprop.com

SQUARE FOOTAGE

2,457 SF

ABOUT THE SPACE

This second floor office space is ideally located with easy access to I-490, the Inner Loop and all the conveniences of downtown such as nearby restaurants, events and more. The building features a gorgeous lobby, elevator access, and plenty of parking.

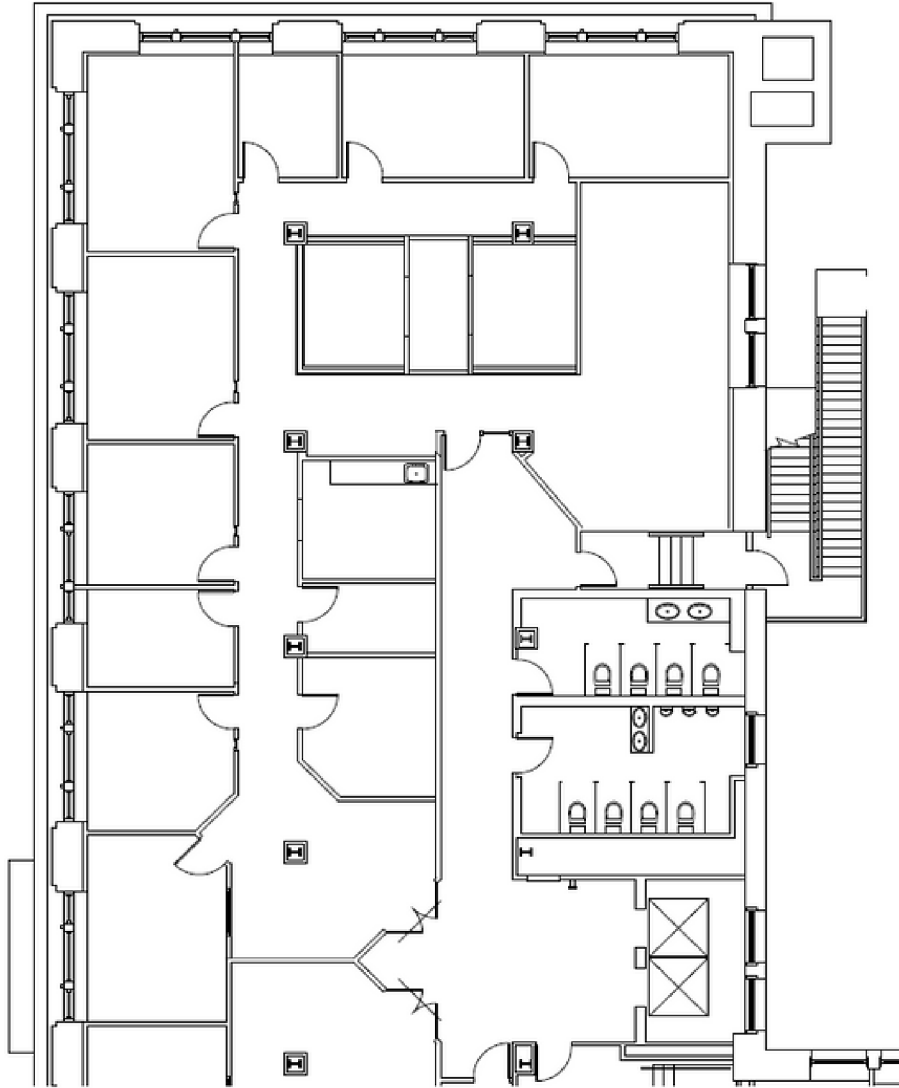


BUCKINGHAM PROPERTIES

WASHINGTON BUILDING

1 S Washington St, Rochester, NY 14614

2,457 SF



BUCKINGHAM PROPERTIES



WASHINGTON BUILDING

1 S Washington St, Rochester, NY 14614



ADAM BORRELL

Senior Leasing Executive

(585) 615-3593

aborrell@buckprop.com

SQUARE FOOTAGE

2,849 SF

ABOUT THE SPACE

This fifth floor office space is ideally located with easy access to I-490, the Inner Loop and all the conveniences of downtown such as nearby restaurants, events and more. The building features a gorgeous lobby, elevator access, and plenty of parking.



BUCKINGHAM PROPERTIES