



## ROCHESTER BUSINESS CENTER

465 Paul Road, Rochester, NY 14624



### ADAM BORRELL

Senior Leasing Executive

(585) 615-3593

aborrell@buckprop.com

### SQUARE FOOTAGE AVAILABLE

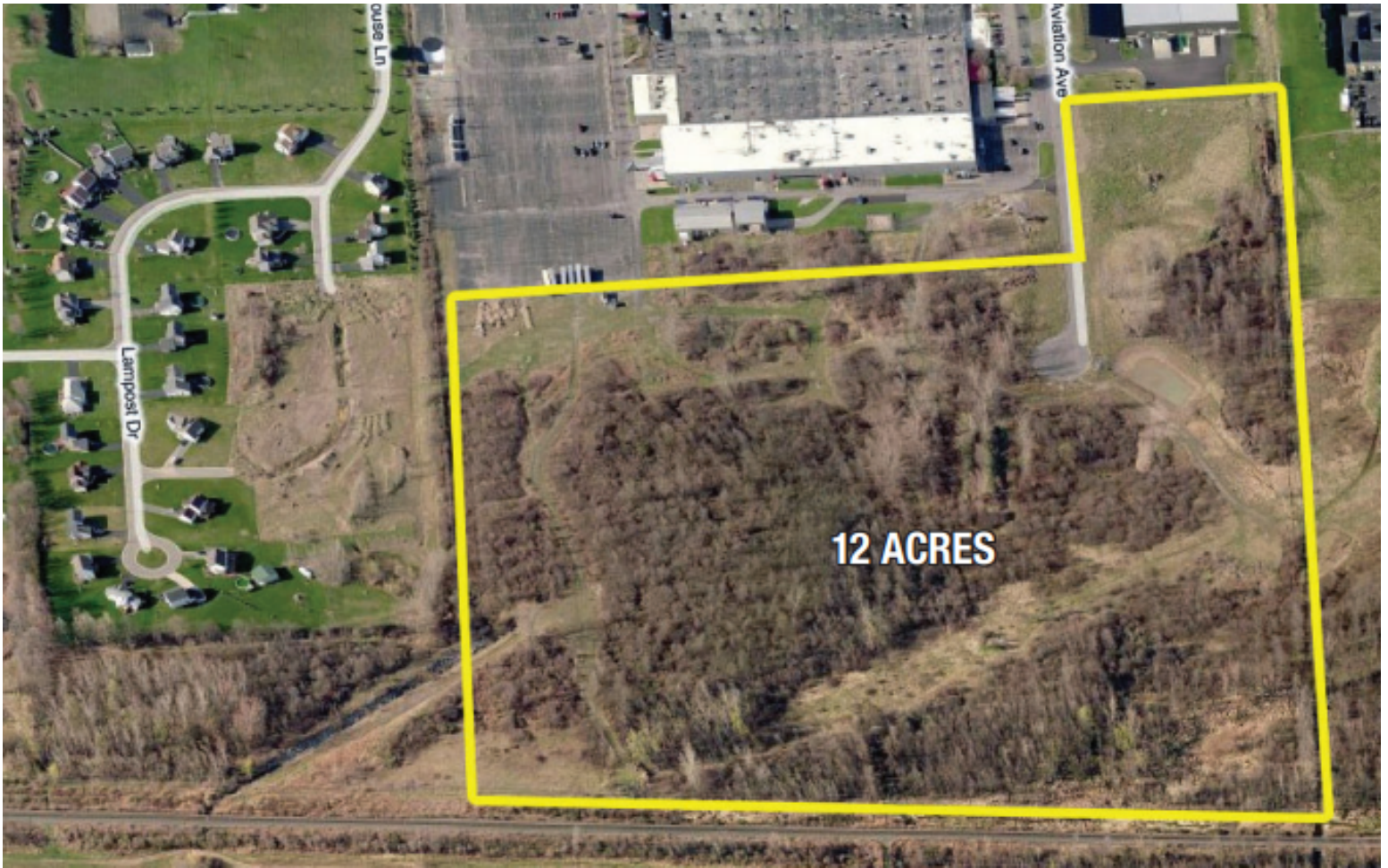
40,000-55,000 SF

### ABOUT THE SPACE

Adjacent to existing manufacturing facility and warehouse/distribution in a campus-type setting. Former Bausch and Lomb Frame Center. Located in Town of Chili. Minutes from City of Rochester, I-590, I-390, NYS Thruway, airport and all truck routes.



BUCKINGHAM PROPERTIES



## READY FOR DEVELOPMENT

465 Paul Road, Rochester, NY 14624



### TOM LATTA

*VP of Leasing &  
Tenant Relations*  
(585) 478-7824

[tlatta@buckprop.com](mailto:tlatta@buckprop.com)

### DEVELOPMENT SPACE

12 acres

### ABOUT THE SPACE

Adjacent to existing manufacturing facility and warehouse/distribution in a campus-type setting. Former Bausch and Lomb Frame Center. Located in Town of Chili. Minutes from City of Rochester, I-590, I-390, NYS Thruway, airport and all truck routes.



BUCKINGHAM PROPERTIES